

Saint Anthony of
Padua Church
P.O. Box 3
Morris, Indiana 47033

Cemetery Rules and
Regulations

Effective
Jan 2009

- Parishioner Cost Will be as follows \$100.00 Single
\$200.00 Double

*****Parishioners are considered those persons registered in the parish office, who are envelope holders for at least 1 year and have been active in a parish function or committee.*** *This is subject to approval by the Pastor, Deacon, and/or Parish Council.******

- NON-Parishioner cost will be as follows
\$5,000.00 Single
\$10,000.00 Double

***** If you currently have a double stone placed prior to January 1st 2009 you will not be charged for a burial site. *****

The above prices are for the right of burial.

- Maintenance of the grounds is the duty of the cemetery board, this includes level, water, seed, fertilize and “mow the grounds.”
- Purchasers are not permitted to disturb the sod in anyway. No planting trees, plants, shrubs, etc.
- Permanent decorations are allowed all year as long as they are on the head stone or placed in a vase.
- The church and Cemetery is not responsible for any items left at the grave, which may become damaged, lost, stolen, or removed.
- Caskets must be placed into a burial vault, which must be made of concrete.
- Cremated remains must be placed in an urn then place into an urn vault.

- Cremated remains will be considered as a full burial site, and must meet the same requirements as a regular burial site with a casket.
- All winter and plastic flowers will be removed after March 15th.
- All head stones must be made of granite, bronze, marble, or limestone and must be consistent with products available from a monument dealer. Any special shapes, sizes, or designs must be approved by the committee. If you are denied, you have the right to appeal the decision with the Pastor and/or Deacon of the church.
- All head stones must be kept in repair by the purchaser. (Chipped, fallen, damaged, etc.) Any head stone repair that must be completed shall be taken care of within 30 days after a notice has been mailed to the address we have on record. If the situation is not taken care of within the 30 days the cemetery has all rights to remove and/or fix any problems at the purchaser's expense.
- The purchaser must erect a head-stone that meets the cemetery specifications.

Head Stone Specifications:

Max Single: Length- 36 inches, Width- 15 inches, Height -26 inches

Max Double: Length -58 inches, Width- 15 inches, Height- 26 inches

Max Triple: Length -76 inches, width- 15 inches, Height -26 inches

Foundation / Footer

These foundations should be 4 inches wider front to back and 4 inches longer left to right than the stone that rest on them.

The depth of the foundation should be at least 24 inches with a stabilizing post of concrete at each of the corners adding an additional 12 inches for a total of 36 inches from the top of the foundation to the bottom of the post.

Revised July 14, 2009: Before footer excavation is to be started, parish office must be notified at 934-6218. Concrete footer excavation must be inspected by a cemetery

committee member or parish council member before cement is to be poured. Footer MUST BE to footer drawing. (See attached.)

Revised January 26, 2011: In the months when we have had heavy amounts of rain and the ground is soft, we will require contractors, monument vault, grave digging equipment, footer installation, and individuals to lay plywood, layment, or fiber mesh board down when driving or moving equipment in our cemetery. We feel this will keep our cemetery in better condition and prevent ruts.

- As of January 2009 we are currently **NOT** pre-selling plots.

****All of the above must be approved by the Pastor, Deacon, and Parish Council of St. Anthony of Padua Church. ****

St. Anthony Cemetery
Footer Inspection Sign-off Sheet

Monument Companies:

Please fax drawing of headstone before engraving. Fax 812-934-5936

Footer must be to cemetery guidelines.

Monument company to be setting marker stone _____

Monument company representative _____

Person digging and setting footer _____

Date _____

Name and Site number _____ Stone Size _____ Footer
Size _____

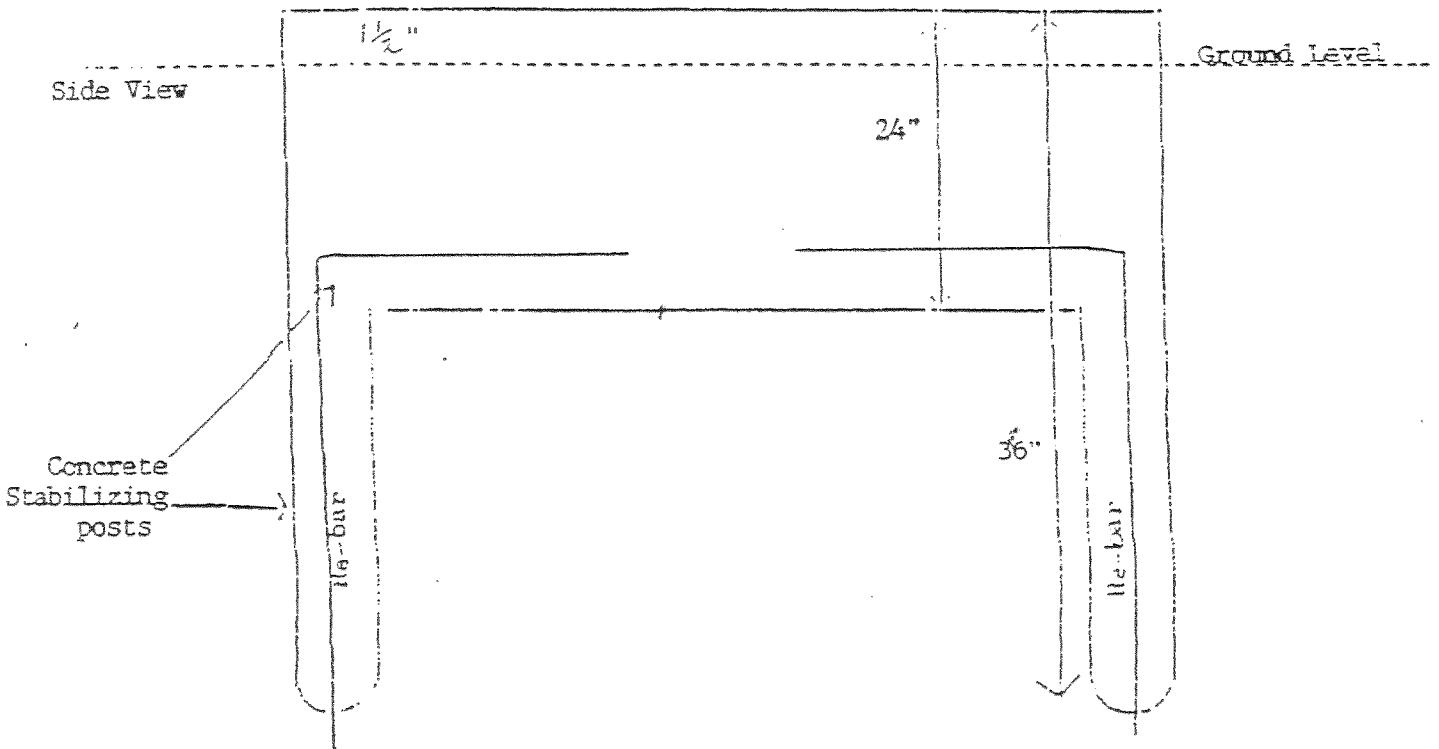
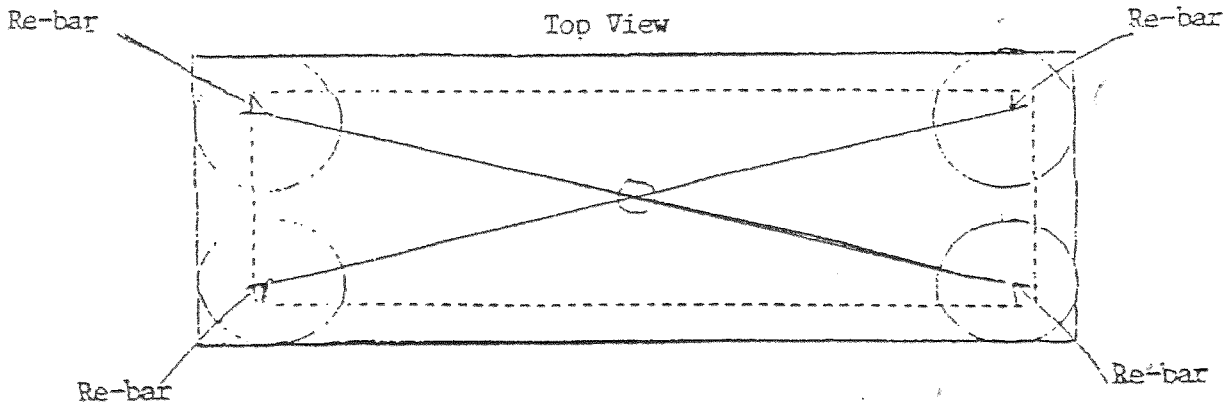
Cemetery committee member or Parish Council member:

Footer excavation and 5/8" rebar has been approved and meets cemetery guidelines for approval of footer.

Parish member _____

Date _____

FOUNDATION - St. Anthony Cemetery



These foundations should be 4 inches wider front to back and 4 inches longer left to right than the monument which rests on them.

The depth of the foundation should be at least 24 inches with a stabilizing post of concrete at each of the corners adding an additional 12 inches for a total of 36 inches from the top of the foundation to the bottom of the post.